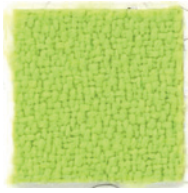


slalom
acoustic & partition systems

TREVIRA CS



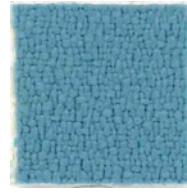
Apple green 463



Yellow 53



Light blue 386



Turquoise 366



Beige 532



White 999



Green tea 425



Carrot 66



Capri 379



Iceberg 377



Camel 533



Light grey 611T



Grass 464



Orange 120



Pastel blue 380



Queen blue 378



Tuscan brown 534



Pearl grey 643



Olive 426



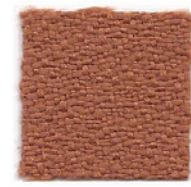
Red 231



Steel blue 263



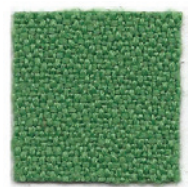
Sapphire 331



Tiger eye 119



Grey 629



Office green 443



Brick 572



Lavender 175



Office blue 332



Brown sugar 569



Quartz grey 636



Forest green 496



Bordeaux 236



Red wine 234



Dark blue 334



Taupe 607



Old silver 625



Peacock blue 411



Fuchsia 173



Purple 262



Midnight blue 333



Dark mud 571



Black 651

for: all products



Beige 952



Yellow 34



Acid green 611E



Fresh air 976



Ghost white 955



Chocolate 352



Orange 971



Cashmere green 89



Blue yonder 200



Grey 953



Brown 605



Red 5



Leaf green 910



Sky blue 942



Dark grey 923



Cob orange 997



Pink 988



Lagoon 608



Light blue 914



Moonstone 512



Bordeaux 192



Violet 921



Peacock blue 962



Honolulu blue 607



Black 925



Grape 603



Purple 508



Blue 193



Dark musk 22



Dark brown 552



Deep sea blue 963



Beige 16



Yellow 3



Pink 17



Grey 4



Light blue 8



Dark orange 14



Orange 9



Fuchsia 10



Acid green 7



Blue 13



Tuscan brown 20



Red 6



Purple 11



Water green 2



Azure 1



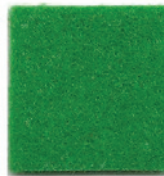
Mud 19



Bordeaux 15



Grapes 23



La salle green 12



Dark blue 5



Rich black 18



Grey green 22



Summer night 21

TWEED



Almond 505



Banana 51



Dark gold 52



Aqua green 455



Air blue 351



Sand 502



Mandarin 102



Pistachio 451



Teal 454



Ash grey 601



Rose 503



Cadmium 101



Foliage 452



Grey blue 301



Rock weed 602



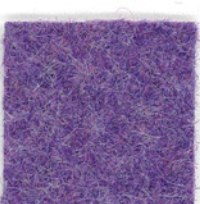
Brown 504



Terra di Siena 103



Racing green 453



Orchid 251



Dark grey 603



Chestnut 552



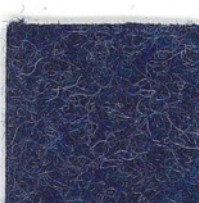
Antique ruby 201



Old brown 553



Purple 252



Night blue 302



Berry 202



Red 211



Coffee 551



Blue 303



Black 1651



Full black 651

TREVIRA CS



Composizione | composition:
100% Poliestere FR - (Tr Cs)

Peso | weight:
460 ± 10% gr/mtl

Altezza | width:
140 ± 2% cm

Abrasiono | abrasion:
(Martindale) UNI EN ISO 12947:2000
100.000, cicli | turns ± 20%

Solidità alla luce | fastness to light:
(Xenotest) UNI EN ISO 105 B02 5/6 ± 1/2

Resistenza al fuoco | fire resistance:
Italia - classe 1
Germania - B1 DIN 4102
Francia - M1
Austria - B1 OENORM B3825 - Q1
OENORM 3800 Part. 1
BS 5852 Crib 5 using a CM Foam 35 kg/cu.m
EN 1021 Part. 1-2 using a CM Foam 35 kg/cu.m
EN 13773 Burning Behaviour: Class 1
EN 13501 - 1: B-s1, d0
EN ISO 6940/6941
USA Calif. BULL. 117 Section E Part. 1
IMO 688 (17) - Bedding Components
IMO 563 (14) - Draperies, Curtains
IMO RES.A. 652 (16) FTP Code MSC 61 (67) Annex 1 Part 8 - Flame Retardant, polyurethane flexible foam, nominal density 35Kg/cu.m. in class 1 IM according to UNI 9175 supplied by Laboratory.
FAR.25853 Classification: yes

Manutenzione | maintenance:
Usare con regolarità l'aspirapolvere a beccuccio liscio, oppure utilizzare spazzole a setole morbide o detergenti professionali per imbottiti.
Use regularly the vacuum-cleaner with smooth spout, or brushes with soft bristles, or upholstered professional cleaners.



Differenze di colore | colour matching:
Leggere differenze di colore fra una partita e l'altra sono da considerarsi normali. Slight differences between dyeing lots are considered normal.

Prodotto riciclabile nel rispetto dell'ambiente. | Recyclable product respecting the environment.

ECOfelt



Composizione | composition:
90% lana, 10% poliestere. | 90% wool, 10% polyester.

Peso | weight:
.420 gr/mtl
.820 gr/mtl
.1200 gr/mtl
.1630 gr/mtl
.2000 gr/mtl

Altezza | width:
150 ± 5% cm

Spessore | thickness:
.1,5 mm
.3 mm
.4,5 mm
.6 mm
.8 mm

Manutenzione | maintenance:
Usare con regolarità l'aspirapolvere a beccuccio liscio, oppure utilizzare spazzole a setole morbide o detergenti professionali per imbottiti.
Use regularly the vacuum-cleaner with smooth spout, or brushes with soft bristles, or upholstered professional cleaners.



Differenze di colore | colour matching:
Leggere differenze di colore fra una partita e l'altra sono da considerarsi normali. Slight differences between dyeing lots are considered normal.

Tessile ecologico di feltri naturali di lana. | Textile ecology of natural wool felts.

Prodotto riciclabile nel rispetto dell'ambiente. | Recyclable product respecting the environment.

PETfelt



Composizione | composition:
100% PET.

Peso | weight:
.420 gr/mtl
.1200 gr/mtl

Altezza | width:
150 ± 5% cm

Spessore | thickness:
.2 mm
.4,5 mm

Manutenzione | maintenance:
Usare con regolarità l'aspirapolvere a beccuccio liscio, oppure utilizzare spazzole a setole morbide o detergenti professionali per imbottiti.
Use regularly the vacuum-cleaner with smooth spout, or brushes with soft bristles, or upholstered professional cleaners.



Differenze di colore | colour matching:
Leggere differenze di colore fra una partita e l'altra sono da considerarsi normali. Slight differences between dyeing lots are considered normal.

Materiale realizzato dal riciclo di bottiglie di plastica. | Material made from recycled plastic bottles.

Prodotto riciclabile nel rispetto dell'ambiente. | Recyclable product respecting the environment.

TWEED



Composizione | composition:
75% lana, 25% poliammide. | 75% wool, 25% polyamide.

Peso | weight:
500 ± 7% gr/mtl

Altezza | width:
150 ± 5% cm

Abrasiono | abrasion:
(Martindale) UNI EN ISO 12947:2000
100.000, cicli | turns ± 20%

Solidità alla luce | fastness to light:
(Xenotest) UNI EN ISO 105 B02 4 ± 1

Resistenza al fuoco | fire resistance:
Italia - classe 1 IM con schiuma standard ignifuga con densità 25 kg/cu.m.
Italia - class 1 IM using a standard FR polyurethane foam 25 kg/cu.m density.

EN 1021 part. 1-2 using a standard foam 20/22 kg/cu.m

Manutenzione | maintenance:
Usare con regolarità l'aspirapolvere a beccuccio liscio, senza spazzolare.
Use regularly the vacuum-cleaner with smooth spout, don't brush.



Differenze di colore | colour matching:
Leggere differenze di colore fra una partita e l'altra sono da considerarsi normali. Slight differences between dyeing lots are considered normal.

Prodotto riciclabile nel rispetto dell'ambiente. | Recyclable product respecting the environment.

2017/01



SLALOM srl